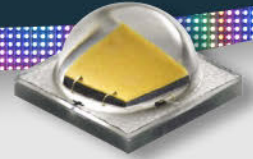


EXPERIENTIAL
SOLUTIONS

3 SIDED SMART LED - DIGITAL



Amazing visibility in any light. Screens displays video, static images, real time Geo-tracking and even be used to play games! Some content restrictions apply per city/county regulations.



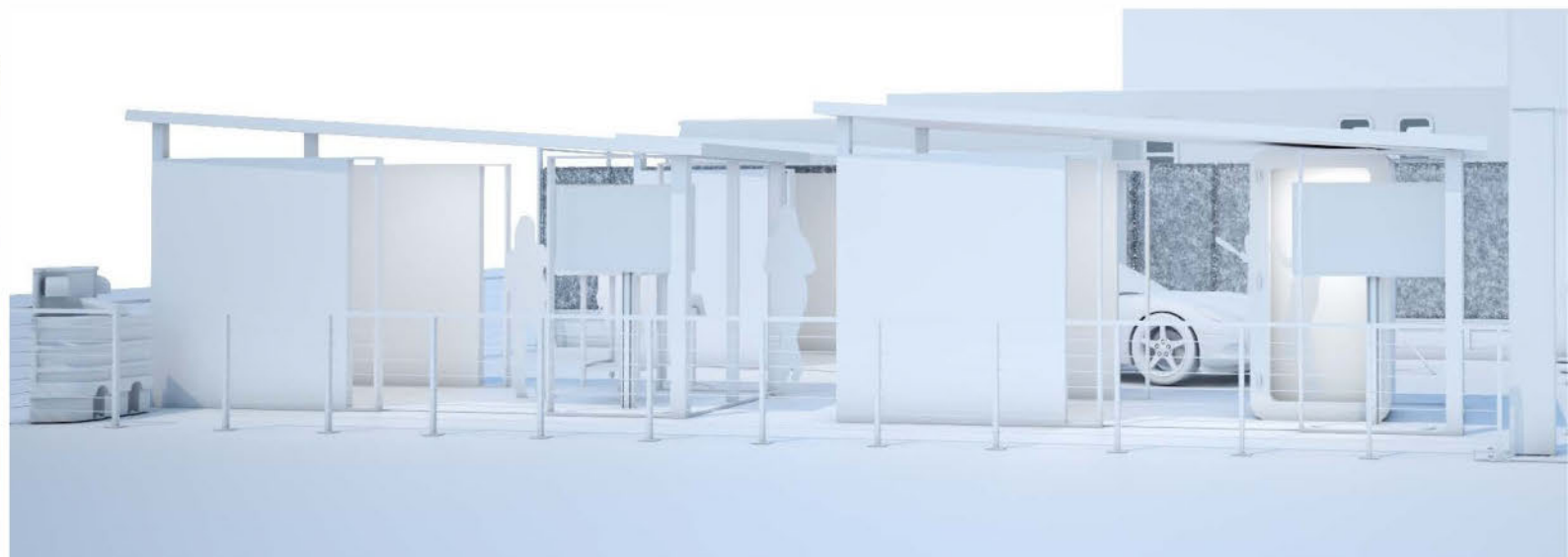
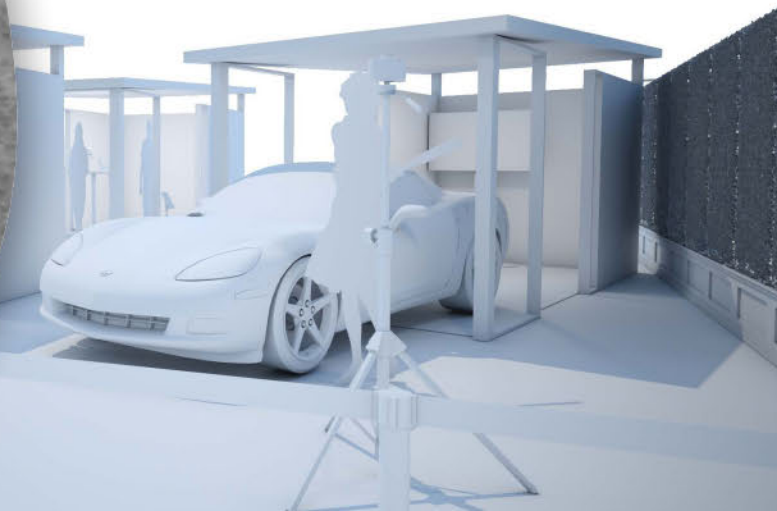
EXPERIENTIAL
SOLUTIONS

RADICAL CREATIONS



EXPERIENTIAL
SOLUTIONS

POP-UP HARDSCAPES



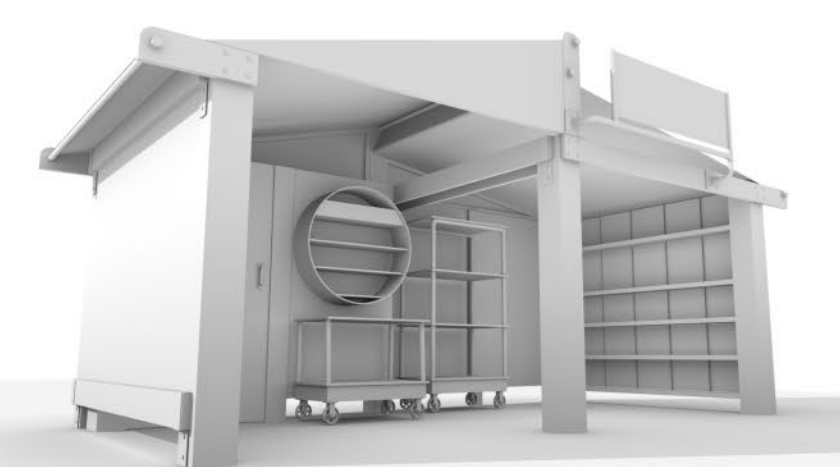
EXPERIENTIAL
SOLUTIONS

POP-UP HARDSCAPES



EXPERIENTIAL
SOLUTIONS

POP-UP HARDSCAPES



EXPERIENTIAL
SOLUTIONS

DOUBLE DECKER BUS



EXPERIENTIAL
SOLUTIONS

TINY HOUSE



STEP VAN & PROP



**Cinnamon
Toast
Crunch.**

We build AMAZING
props for TV
commercials
and PR stunts.

80% of marketers
believe live events
are critical to the
company's success.
- Bizzabo



EXPERIENTIAL
SOLUTIONS

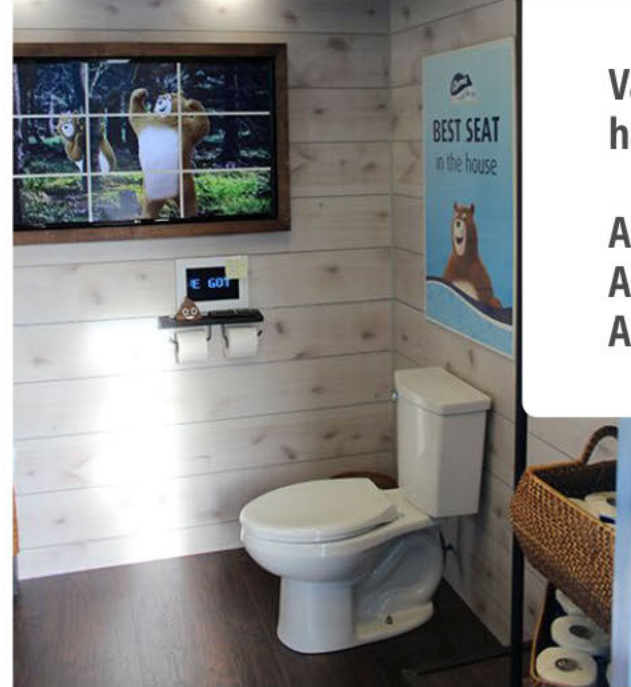
STEP VAN & PROP



Charmin

Van-GO was the coolest mobile bathroom NYC had ever seen! This PR program was a huge hit!

Actors / Influencers:
Alani Nicole "La La" Anthony
Anthony Anderson

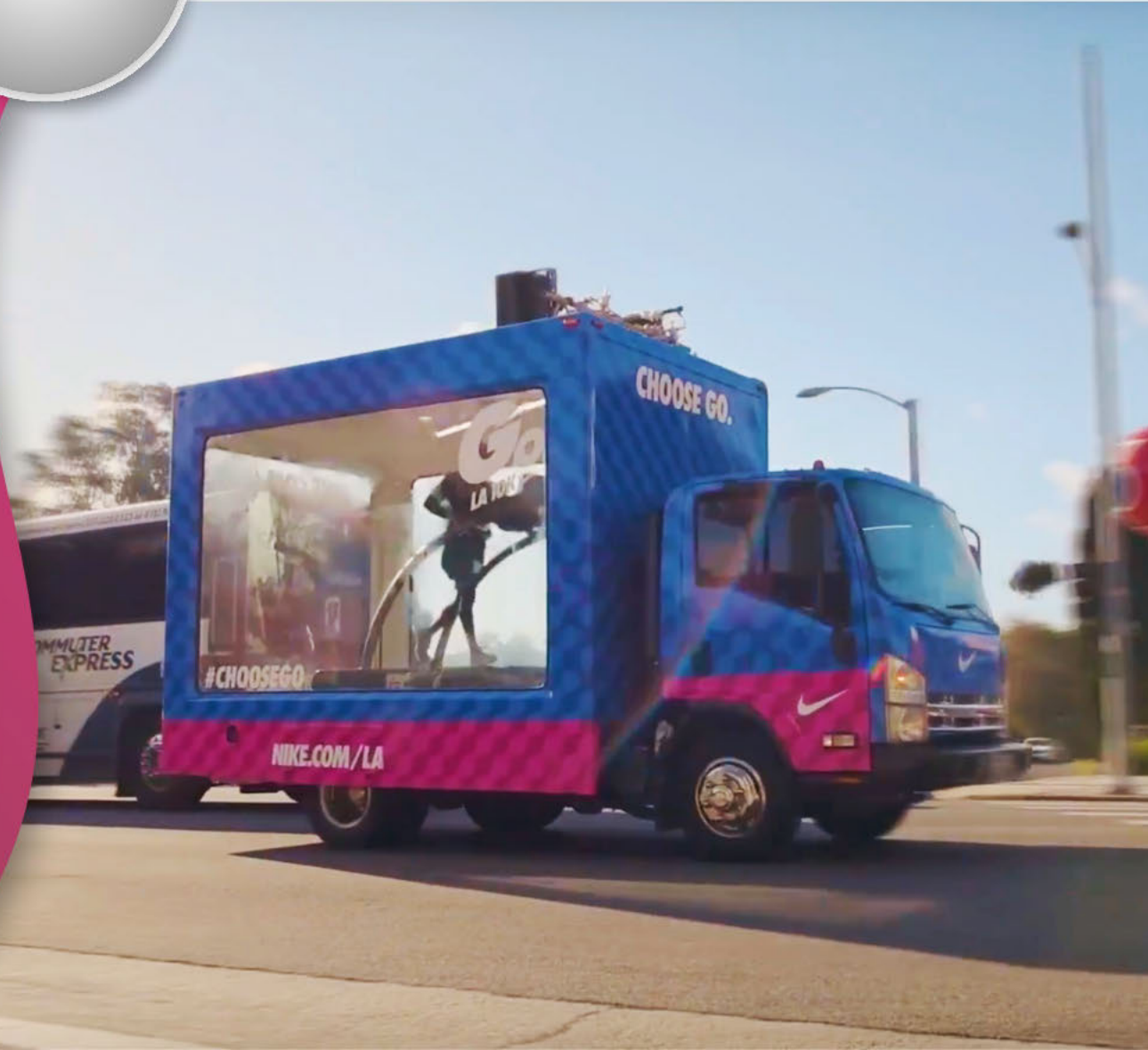


EXPERIENTIAL
SOLUTIONS

GLASS TRUCKS - INTERACTIVE



NIKE CAMPAIGN
KEVIN HART



EXPERIENTIAL
SOLUTIONS

SCHOOL BUS



IT

4D | VR Experience

Entire ComicCon Lineup

This creepy school bus featured a sewer pipe and 4D | VR experience for the movie "IT". Oh yeah - and a scary killer clown!



EXPERIENTIAL
SOLUTIONS

28' STAGE TRUCK



SONY DELL

For this red carpet partnership, our 28' truck became a hi-tech interactive stage for the Hollywood premier of the Spider-Man Homecoming movie.

Actors:
Jon Voight, Terry Crews
and Yara Shahidi



EXPERIENTIAL
SOLUTIONS

40'L HIGH CUBE CONTAINER



“
...I trust you & look forward to many more projects together.
– AGENCY

“
...THANK YOU.
I can't say this enough!
– WB CMO

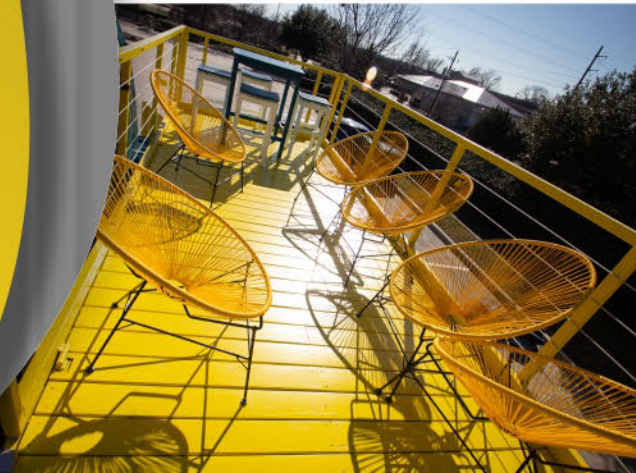
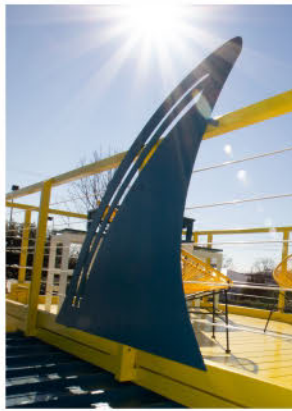
“
...a perfect showpiece for our merchandise.
– WB CEO

This pop-up retail store featured a 3D sign and huge HD video screen.
We partnered with WB for the World Premiere of the DCTV Series Black Lightning for The CW, and also showcased this exhibit at SXSW.

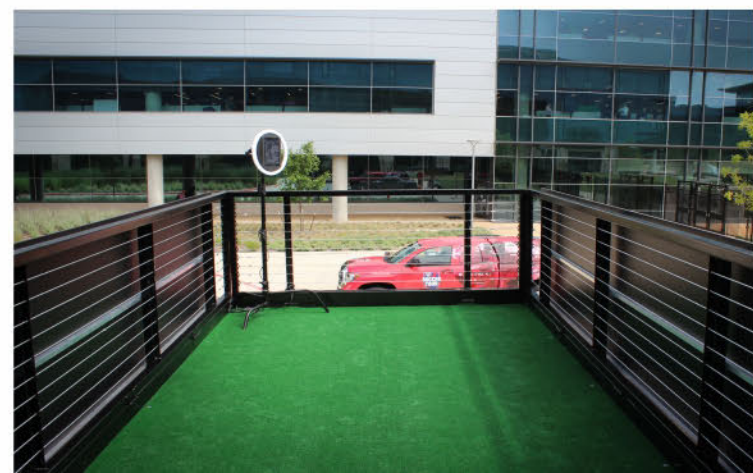


EXPERIENTIAL
SOLUTIONS

20'L DOUBLE DECKER CONTAINER



This amazing double-decker container affords multiple zones of activation, and can even provide elevator access to the upper deck.



EXPERIENTIAL
SOLUTIONS

13' GLASS PODS



- Negotiated all event space.
- Generated over 14 million impressions
 - Sold over 300 vacuums
 - Traveled coast to coast



3 Events living as 1 event

Platform for key influencers. Generated content to target millennial females.



EXPERIENTIAL
SOLUTIONS

CUSTOM TRAILER PRODUCTION



We have mastered the art of taking any size trailer and building a visually dynamic display that is also easy to set-up, durable and safe.



EXPERIENTIAL
SOLUTIONS

CUSTOM TRAILER



EXPERIENTIAL
SOLUTIONS

CUSTOM TRAILER



EXPERIENTIAL
SOLUTIONS

ASSET OPTIONS



1 day promotion
or multi-year fleet
management, we've
got you covered -
anywhere in
North America!

KIND: 7-year partnership with dynamic growth, from 1-24 vehicles



EXPERIENTIAL
SOLUTIONS

MULTI-ASSET | MULTI-MARKET



EXPERIENTIAL
SOLUTIONS

MOBILE POP-UP RETAIL



EXPERIENTIAL
SOLUTIONS

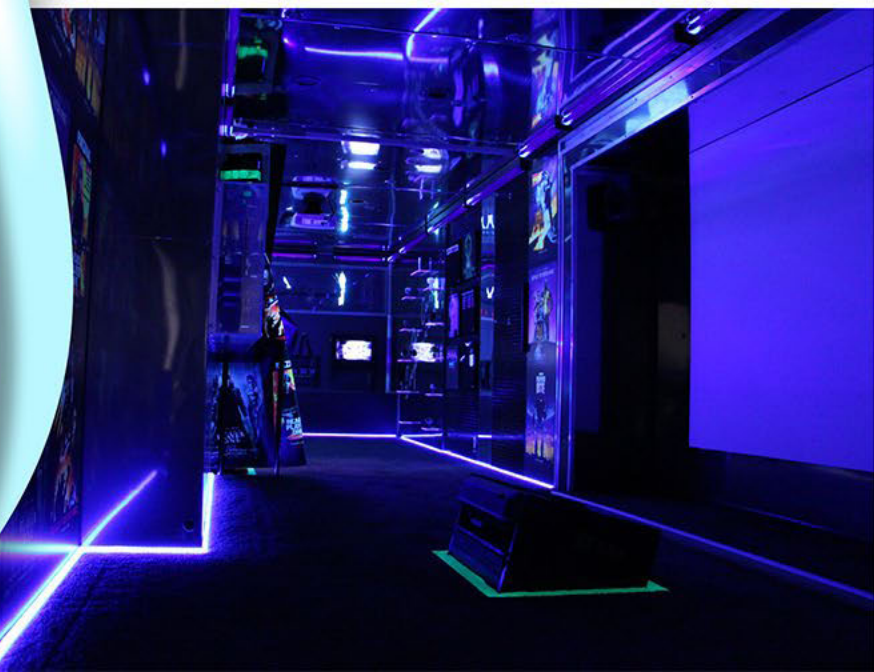
PREVOST BUS

When you need to make a big and bold impression, these beautiful luxury buses can be customized multiple ways for your program.



EXPERIENTIAL
SOLUTIONS

38' RV - DOUBLE DOOR DUAL SLIDE OUT



EXPERIENTIAL
SOLUTIONS

38' RV - WITH A DOUBLE SLIDE OUT



ZENNI®

- 10 colleges
- 10K+ miles traveled
- 100+ SKU's
- Eye exams inside RV
- Oversized glasses photo-op

Thousands of glasses sold!



EXPERIENTIAL
SOLUTIONS

24' RV - DROP DOWN STAGE



This retro-RV was customized inside and out, used in national TV commercials and toured two major college football games.



EXPERIENTIAL
SOLUTIONS

AIRSTREAMS NEW/PRE-OWNED INVENTORY AVAILABLE



CERTIFIED
DEALER & CONVERTER



EXPERIENTIAL
SOLUTIONS

GLASS TRUCKS - INTERACTIVE



Largest glass box fleet in the US.

12' - QTY 25+

16'-18' - QTY 3+

24'-26' - QTY 3+

- 1-5 glass window configuration
 - Quick set-up
 - Permit friendly
 - Small space needed
- Great for social media content



EXPERIENTIAL
SOLUTIONS

GLASS TRUCKS - INTERACTIVE



EXPERIENTIAL
SOLUTIONS

GLASS TRUCKS - INTERACTIVE

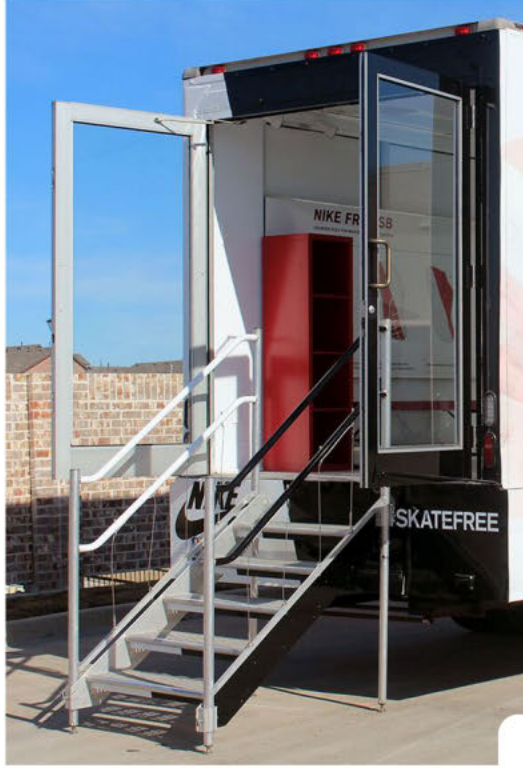


When a new phone launched, we partnered with HTC to provide a mobile training center that hit 1,200 Verizon stores throughout the country on a B to B program. Vehicles included: interactive screens, WiFi adjustable lights, charging stations and much more.



EXPERIENTIAL
SOLUTIONS

GLASS TRUCKS - INTERACTIVE - DIGITAL



When NIKE needed to launch their new skateboard shoe, the ultimate mobile store was deployed, allowing consumers to test the shoe, and purchase onsite!

95% of marketers agree that live events provide attendees with a valuable opportunity to form in-person connections in an increasingly digital world. - Bizzabo

EXPERIENTIAL
SOLUTIONS

GLASS TRUCKS - MULTIPURPOSE



We built 10 trucks in 5 days, then toured the country for 12 months and delivered Cricket's latest promotions directly to consumers!



EXPERIENTIAL
SOLUTIONS

SAMPLING VEHICLES



We are the largest sampling company in North America for McDonald's. Over 3 million samples served to date!



EXPERIENTIAL
SOLUTIONS

STEP VANS & FOOD TRUCKS

Fleet of 20+



EXPERIENTIAL
SOLUTIONS

STREET TEAMS - NATIONWIDE



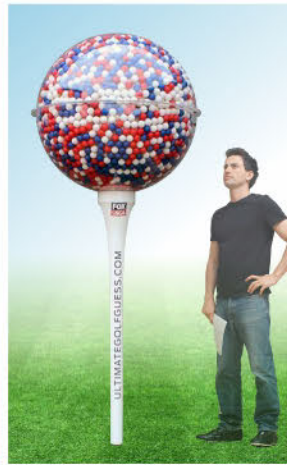
EXPERIENTIAL
SOLUTIONS

CUSTOM FABRICATION

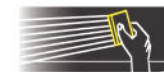


EXPERIENTIAL
SOLUTIONS

CUSTOM FABRICATION



3M



3M Preferred
Graphics Installer



3M Endorsed
Architectural
Installer



3M™ MCS™ Warranty

- Steel Structures
- Aluminum Fabrication
- Wood / Cabinetry
- Custom Signage
- Specialty Lighting
- Custom Vehicles
- Props
- Wall Coverings
- and much more!



EXPERIENTIAL
SOLUTIONS

SOCIAL SHARE BOOTH



Make social impressions using our mobile photo booth. This allows influencers to take stunning photos through an exciting, interactive, branded experience that you control.

LATEST ADDITIONS



JEEP M.I.S.A.

In just minutes, a single person can raise three panels, exposing highly functional spaces that facilitate multiple configurations ranging from, outdoor viewing screens for digital ads and streaming services, custom shelving for product, vanity consoles with lighting and much more! Perfect for mobile pop-up retail!



DIGITAL WALL COVERINGS

We are able to produce films that adhere to Stone, Tile, Wood, Concrete Cast Stone, Metal, Plastics, Glass and more. Imagine the possibilities!

